

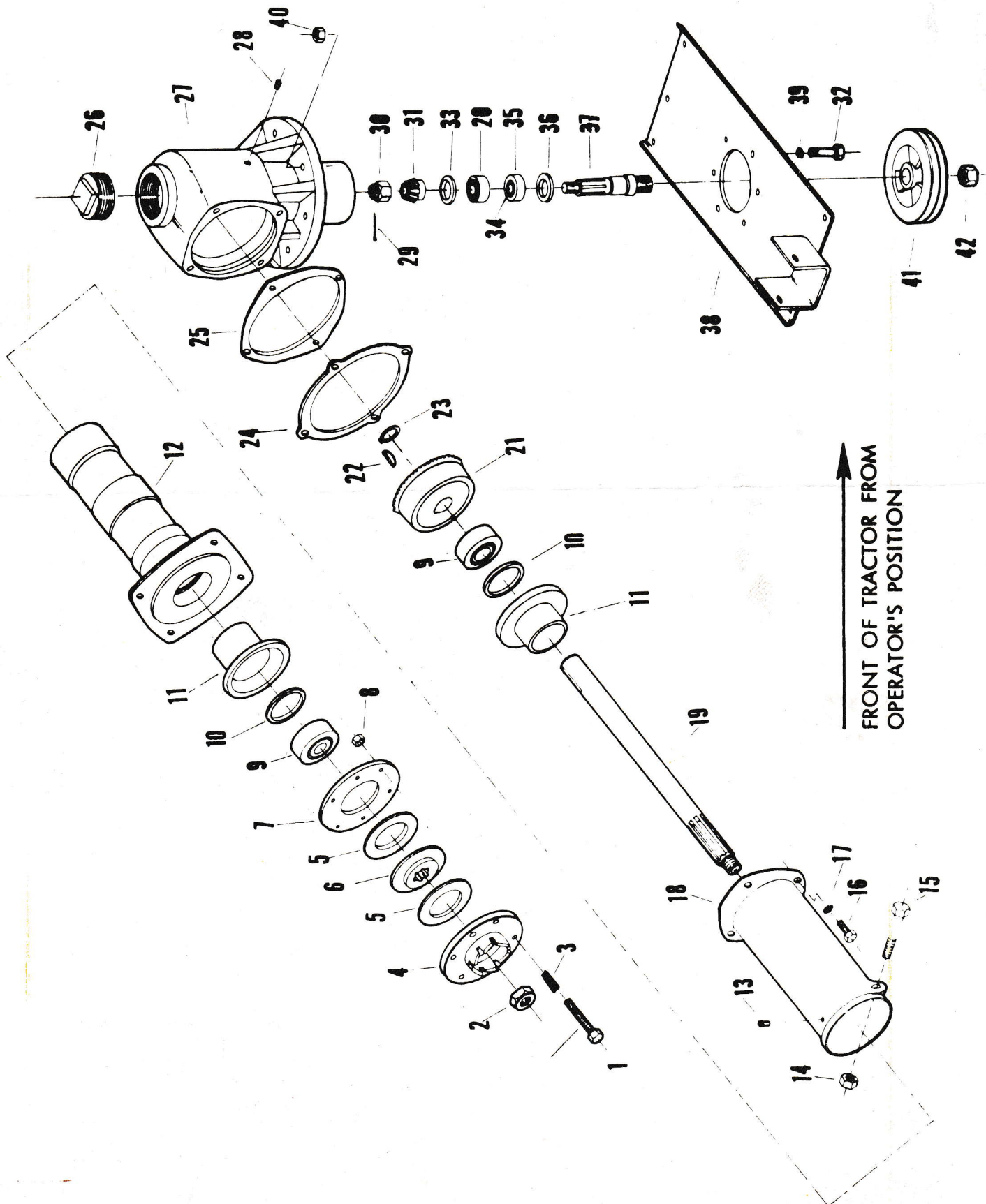
## ILLUSTRATED PARTS LIST

40" COMMERCIAL MOWER

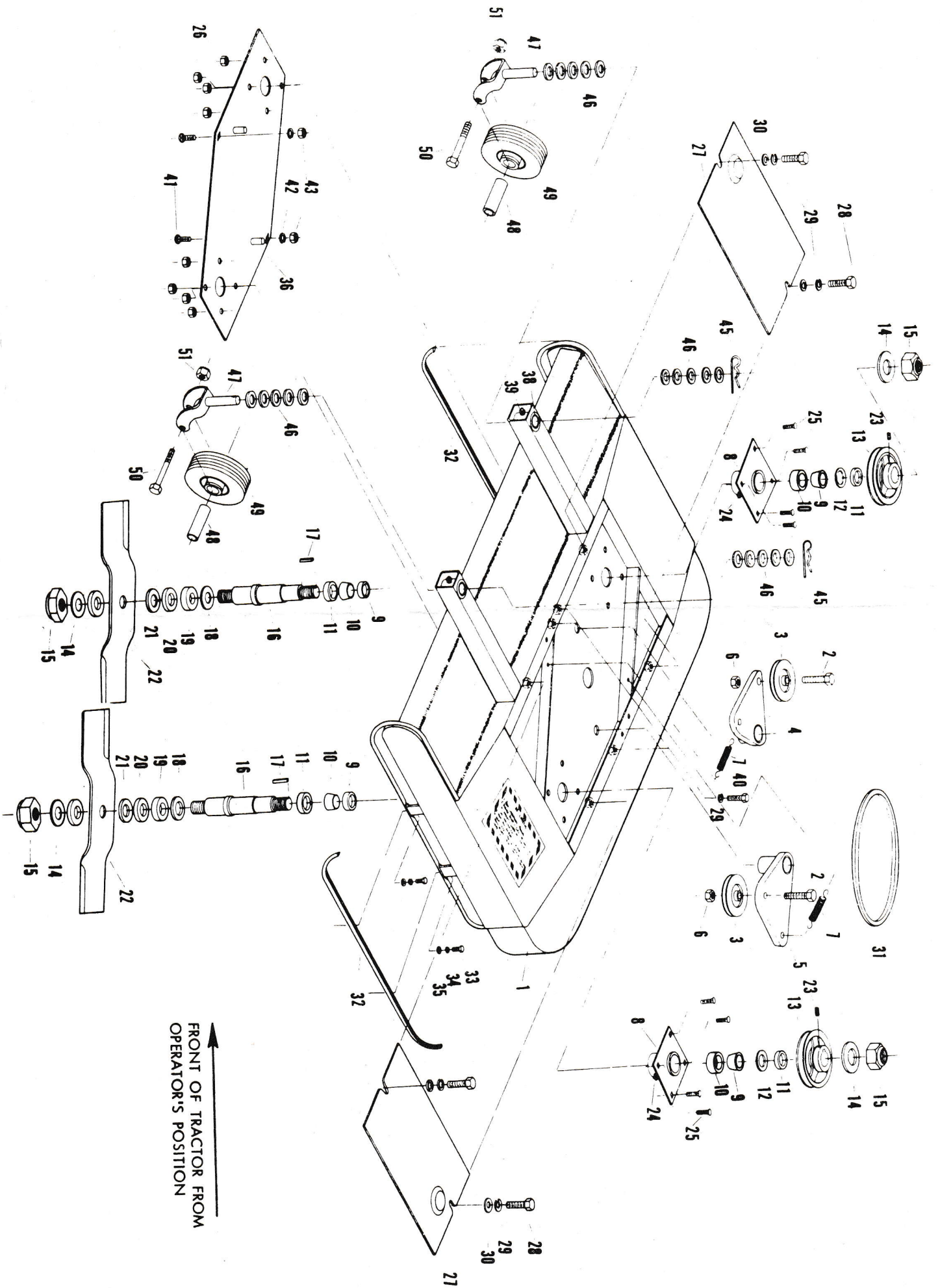
Model Number 15689E1

Effective Date Apr. 15, 1972

Form Number 19616P1



<u>ITEM NO.</u>	<u>PART NO.</u>	<u>DESCRIPTION</u>
1	181618	5/16-24 x 1-3/4 Hex Hd Bolt
2	13412P1	5/8-18 Esna Locknut
3	12871P1	Spring
4	12867P1	Dog Plate
5	12870P1	Friction Washer
6	12869P1	Drive Plate
7	12868P1	Back Plate
8	13622P1	5/16-24 Thin Light Esna
9	13143P1	Bearing Race
	13144P1	Bearing Cone
10	13122P1	Oil Seal
11	12550P1	Oil Seal Retainer
12	11815P1	Shaft Housing
13	9411010	Lincoln #5000 or Equiv. Grease Fitting
14	435507	Locknut 1/2-13 Washer Insert
15	180193	1/2-13 x 3-3/4 Hex Hd Bolt C1038 Ht. Cad.
16	180122	3/8-16 x 1 Hex Hd Bolt
17	138542	3/8 Internal Tooth Lock Washer
18	12023P1	Swivel Casting
19	12566P1	Drive Shaft
20	13145P1	Race Roller Bearing
	13146P1	Cone Roller Bearing
21	12862P1	Bevel Gear
22	120502	#11 Woodruff Key
23	13187P1	Retaining Ring
24	14101P1	Gear House Shim .020
	12490P1	Gear House Shim .005
25	12491P1	Gasket
26	10499P1	Pipe Plug
27	9236P1	42 In. Mower Gear Housing
28	103877	Sq. Hd. Pipe Plug Steel
29	119120	3/32 x 1-1/4 Cotter Pin
30	125384	5/8-18 Hex Thick Slotted Nut
31	12850P1	Bevel Pinion
32	9229P1	Special Hex Bolt
33	12852P1	Gear Shim
	13646P1	Gear Shim .010
34	13142P1	Cone Roller Bearing
35	13139P1	Race Roller Bearing
36	13171P1	Dual Lip Oil Seal
37	11363P1	Drive Rotor Shaft
38	11366A1	Mounting Plate Weldment
39	120384	1/2 Spring Lock Washer
40	120378	1/2-13 Light Semi-Finished Hex Nut
41	11364P1	Drive Sheave
42	11365P1	Special Nut
NS	10102A1	Attachment Clutch Assembly



FRONT OF TRACTOR FROM  
 OPERATOR'S POSITION

<u>ITEM NO.</u>	<u>PART NO.</u>	<u>DESCRIPTION</u>
1	11369A1	Deck Weldment
2	180126	3/8-16 x 1-1/2 Gr 5 H.H. Bolt Plated
3	9231P1	Idler
4	11379A1	Idler Pivot Arm Weldment
5	11382A1	Idler Pivot Arm
6	456004	3/8-16 Washer Insert Lock Nut
7	11263P1	Spring
8	9200A1	Spindle Bearing Housing Weldment
9	9245P1	Bearing Race
10	9246P1	Bearing Cones
11	9206P1	Garlock Seal
12	9204P1	Seal Ring
13	9207P1	Rotor Pulley
14	131001	15/16 x 2-1/4 x .165 Flat Washer
15	17313P1	7/8-9 Heavy Thin Locknut Hex
16	9203P1	Rotor Shaft
17	9213P1	Square Key
18	9205P1	Dust Shield
19	9211P1	Blade Spacer Collar 3/4"
20	9210P1	Blade Spacer Collar 1/2"
21	9209P1	Blade Spacer Collar 1/4"
22	9212P1	Mower Blade
23	102581	5/16 x 3/8 Hex Socket Cup Point Set Screw
24	9411027	Lube Fitting 1/4-28
25	120915	3/8-16 Rd. Hd. Sq. Nk. Bolt 1 Lg.
26	456004	3/8-16 Washer Insert Lock Nut
27	11384P1	Belt Cover
28	9428638	3/8-16 x 5/8 Hex Hd Bolt
29	120382	3/8 x .170 x .123 Sp. Lock Washer
30	120394	13/32 ID x 13/16 OD x .065 Thk Washer
31	9240P1	Drive Belt
32	9223P2	Skid
33	181596	5/16-24 x 7/8 Hex Hd Bolt
34	120214	5/16 Med. Sp. Type Lock Washer
35	120393	11/32 x 11/16 x .065 Cad. Plated Washer
36	11376A1	Deck Support Weldment
NS	18549P1	Decal Danger
38	11375P1	Bronze Bearing
39	9411027	Lube Fitting 1/4-28
40	180122	3/8-16 x 1 Hex Hd Bolt
41	120897	1/2-13 x 3 Rd. Hd. Sq. Nk. Carr. Bolt Cad.
42	120384	1/2 Spring Lockwasher
43	120378	1/2-13 Lt. Semi-Finished Hex Nut
NS	9251A1	Guard Weldment
45	10405P1	Hair Pin Cotter
46	131017	13/16 x 1-15/32 x .134 Flat Washer
47	11385A1	Caster Fork Weldment
48	11387P1	Bushing
49	11386P1	Caster Wheel
50	180193	1/2-13 x 3-3/4 Hex Hd Bolt C1038 Ht Cad.
51	435507	Locknut 1/2-13 Washer Insert

Complete 40" Rotary Mower Spindles R.H. #10398A1 and L.H. #10399A1  
 Include Item Numbers 8 through 21 and Numbers 23 and 24